

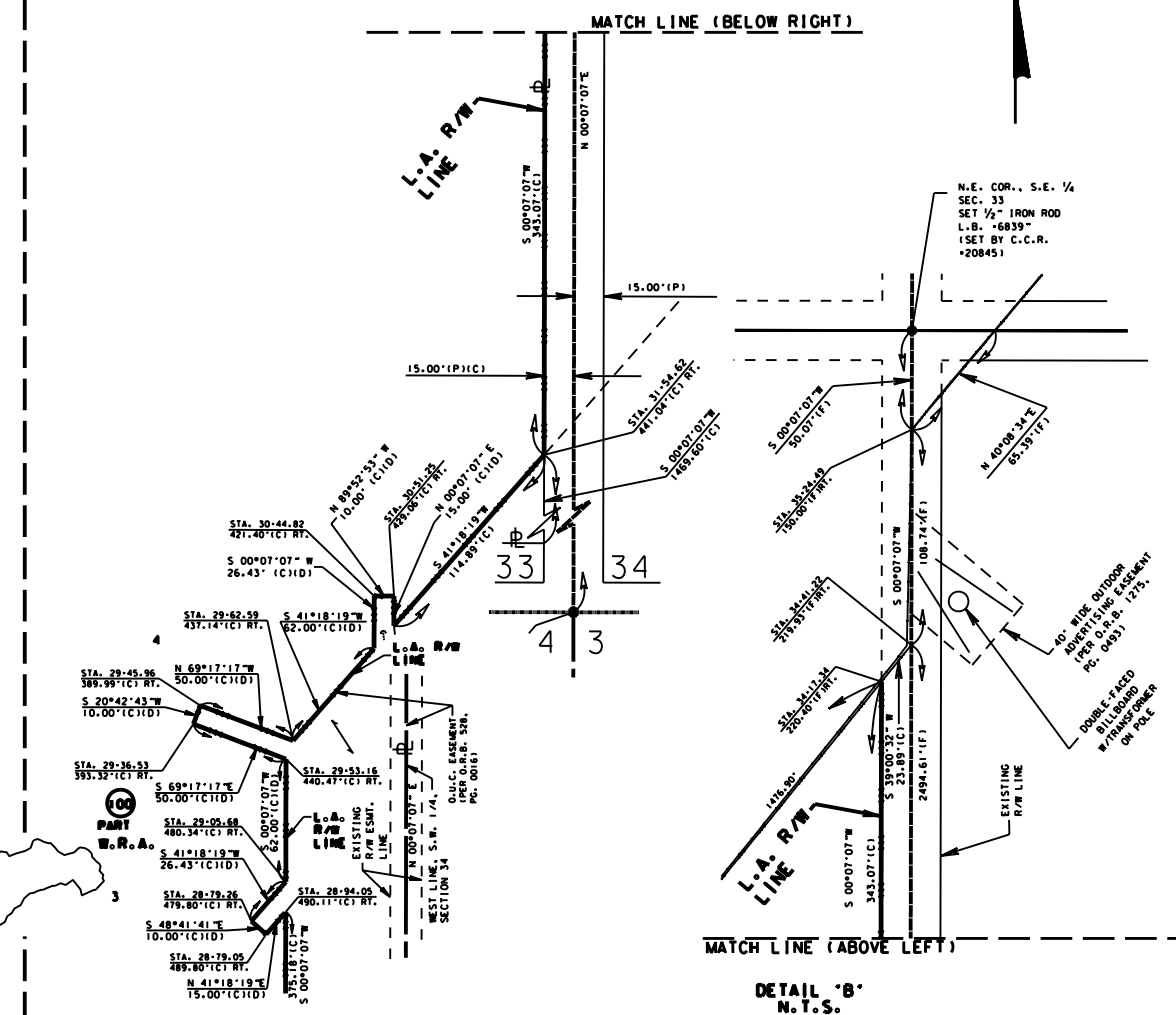
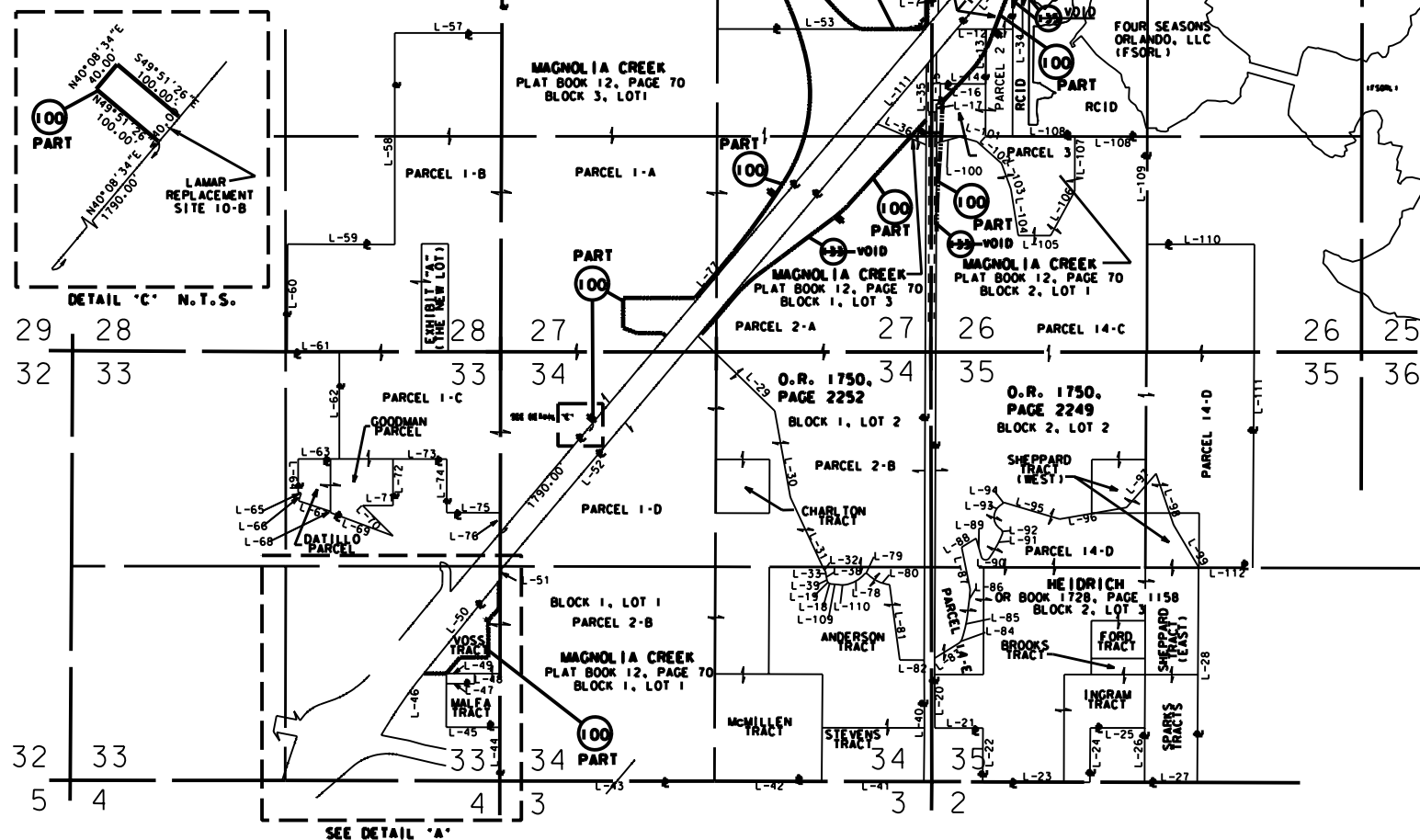
LINE TABLE							
NAME	DISTANCE	NAME	DISTANCE	NAME	DISTANCE	NAME	DISTANCE
L-1	665.92'	L-31	970.80'	L-61	645.65'	L-91	333.76'
L-2	663.59'	L-32	54.33'	L-62	1,325.63'	L-92	75.38'
L-3	625.08'	L-33	42.43'	L-63	510.23'	L-93	373.09'
L-4	1,998.52'	L-34	2,152.70'	L-64	410.57'	L-94	30.88'
L-5	578.80'	L-35	985.69'	L-65	40.77'	L-95	718.75'
L-6	170.33'	L-36	660.84'	L-66	100.00'	L-96	839.94'
L-7	383.10'	L-37	2,966.71'	L-67	414.48'	L-97	555.62'
L-8	3,217.02'	L-38	38.53'	L-68	13.20'	L-98	668.12'
L-9	809.99'	L-39	34.40'	L-69	825.91'	L-99	606.11'
L-10	1,327.46'	L-40	1501.21'	L-70	530.47'	L-100	297.02'
L-11	1,080.39'	L-41	1,296.97'	L-71	375.00'	L-101	219.31'
L-12	360.86'	L-42	1,326.86'	L-72	575.98'	L-102	405.84'
L-13	677.75'	L-43	2,653.85'	L-73	663.77'	L-103	338.15'
L-14	560.76'	L-44	663.36'	L-74	663.17'	L-104	581.78'
L-15	246.81'	L-45	663.34'	L-75	663.32'	L-105	400.32'
L-16	43.33'	L-46	538.15'	L-76	246.94'	L-106	625.75'
L-17	485.72'	L-47	350.00'	L-77	8,145.69'	L-107	675.74'
L-18	22.91'	L-48	125.00'	L-78	265.18'	L-108	771.55'
L-19	30.31'	L-49	350.00'	L-79	49.12'	L-109	108.42'
L-20	665.97'	L-50	1,540.41'	L-80	304.78'	L-110	84.48'
L-21	625.99'	L-51	58.70'	L-81	940.67'	L-111	946.83'
L-22	665.97'	L-52	3,773.15'	L-82	302.09'	L-112	659.58'
L-23	1,331.61'	L-53	2,566.25'	L-83	346.15'	L-113	3,435.27'
L-24	665.97'	L-54	1,326.57'	L-84	76.58'	L-114	660.84'
L-25	664.20'	L-55	2,662.08'	L-85	377.64'	L-115	6,371.52'
L-26	665.97'	L-56	1,377.25'	L-86	238.19'	L-116	6,369.72'
L-27	663.17'	L-57	1,327.19'	L-87	536.53'		
L-28	2,653.90'	L-58	2,618.24'	L-88	208.83'		
L-29	1,327.41'	L-59	1,324.05'	L-89	235.44'		
L-30	1,083.90'	L-60	1,330.43'	L-90	124.19'		

PARENT TRACT PARCEL 100

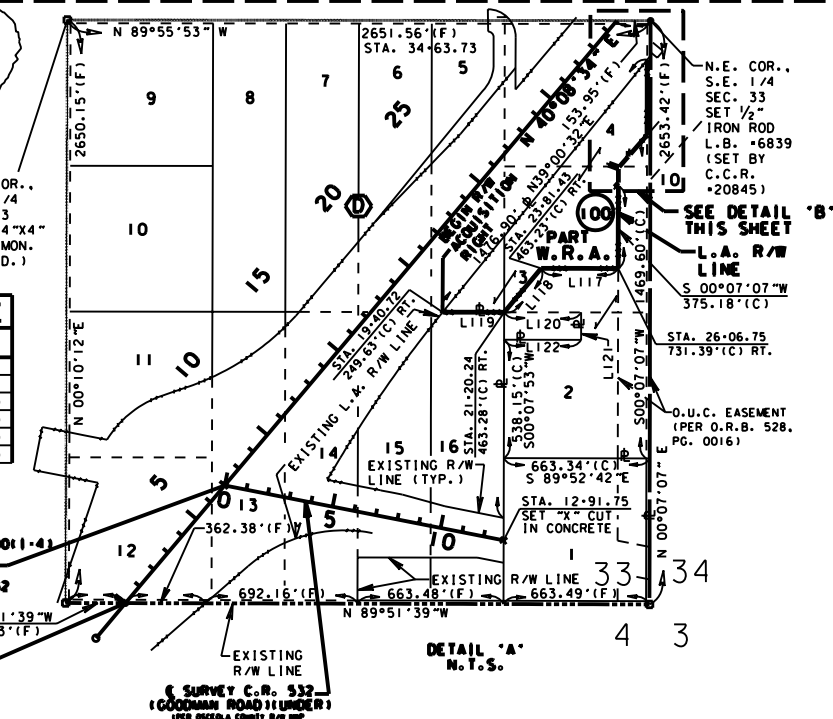
AREAS:

BLOCK 1, LOT 1: 444:ACRES
 BLOCK 1, LOT 2: 236:ACRES
 BLOCK 1, LOT 3: 7:ACRES
 BLOCK 2, LOT 1: 48:ACRES
 BLOCK 2, LOT 2: 385:ACRES
 BLOCK 2, LOT 3: 201:ACRES
 BLOCK 3, LOT 1: 706:ACRES
 BLOCK 4, LOT 1: 88:ACRES

TOTAL: 2115:ACRES
 REMAINDER: 1445:ACRES



DETAIL 'A' LINE TABLE		
NAME	BEARING	DISTANCE
L117	N 89°53'46"W	350.25'(C)
L118	S 40°07'54"W	261.19'(C)
L119	N 89°53'46"W	279.06'(C)
L120	S 89°53'46"E	350.00'(C)
L121	S 00°07'53"W	125.00'(C)
L122	N 89°53'46"W	350.00'(C)



PARENT TRACT SHEET
 THIS MAP IS NOT A SURVEY

NOTE:
 SEE SHEET ONE FOR GENERAL NOTES AND LEGEND.
 S.R. 429 (WESTERN BELTWAY) FROM S.R. 400 (I-4)
 TO SANDHILL ROAD

RIGHT OF WAY MAP

FLORIDA DEPARTMENT OF TRANSPORTATION
 RIGHT OF WAY MAPPING

APPROVED BY
 ROBERT E. CHASON, JR.
 TURNPIKE DISTRICT LAND SURVEYOR

REVISION	BY	DATE
REV PARCEL 134 B 135	MAC	2/02/06
REV PARCEL 134 B 135	MAC	10/07/05
ADD PARCEL 134 B 135	MAC	05/24/05
Rev Four Seasons B RCID	HDW	08/26/03
Rev LA R/W Por 129	J K H	11/08/01

REVISION	BY	DATE
Rev Par 100, Void 133	J K H	6/27/01
Add Mag Creek data	E N W	5/22/01
Rev Par 100,	F J C	4/18/01
Added Por 133,	J K H	3/20/01
Rev LA R/W At 1-4	J K H	3/20/01

PRELIM	BY	DATE
CHECKED	E. LUTES	10/17/00

F.A. PROJECT NO. N/A
 STATE ROAD NO. 429 OSCEOLA COUNTY

MAPS PREPARED BY	FIELD BOOK NO.'S
URS CORPORATION SOUTHERN	SEE GENERAL NOTE 11, SHEET 1
W.P.I. NO. N/A	SCALE: 1"=1000'
F.P. NO. 403497-2	SHEET 10 OF 13